

ProLED® Round LED High Bay Gen II Installation Instructions



- Please read the below articles carefully to see how to use this product safely.
- Warning contents and attention contents related to product safety use, please be sure to follow it.

⚠ Warning

- This High Bay is rated to operate within the following voltage range: AC100-277V & AC277-480V, 50/60Hz.
- If input voltage exceeds this range, it may cause tube failure. Please be sure to operate under correct input voltage.
- Ensure ambient operating temperature of (-) 40°C through 50°C.
- Operating the high bay outside the temperature range previously stated will reduce the product's rated lifespan
- Make sure to turn off power before starting the installation process.

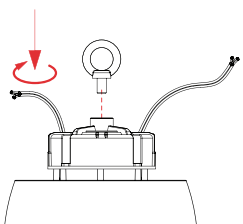
⚠ Attention

- IP rating: IP65, can work under wet locations.
- Please keep the UFO High bay away from any corrosive substance. When you clean it, please use damp or dry cloth.
- Keep the product away from any corrosive substance. When cleaning, please use damp or dry cloth.

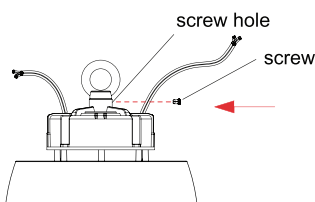
Model	RHB100/110U/XX	RHB150/110U/XX	RHB200/110U/XX	RHB240/110U/XX
Power	100W	150W	200W	240W
Input Current	1.1A	1.65A	2.2A	2.64A
Input Voltage	AC100-277V			
Frequency	50/60Hz			
Model	RHB100/110H/XX	RHB150/110H/XX	RHB200/110H/XX	RHB240/110H/XX
Power	100W	150W	200W	240W
Input Current	0.398A	0.596A	0.795A	0.954A
Input Voltage	AC277-480V			
Frequency	50/60Hz			

1. Ring Mount Installation

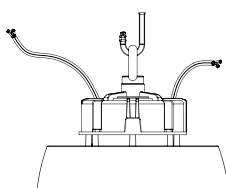
1.Lock the ring.



2.Tighten the screw.
(This step can be omitted if there is no screw hole.)

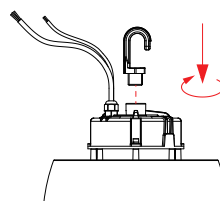


3.Hang up the light

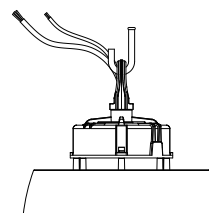


2. Hook Mount Installation

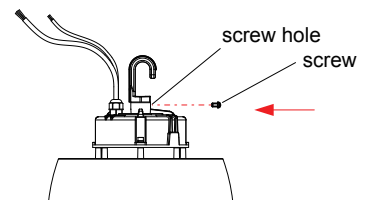
1.Lock the hook.



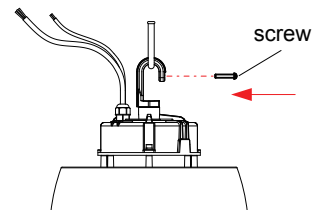
3.Hang up the light.



2.Tighten the screw.
(This step can be omitted if there is no screw hole.)

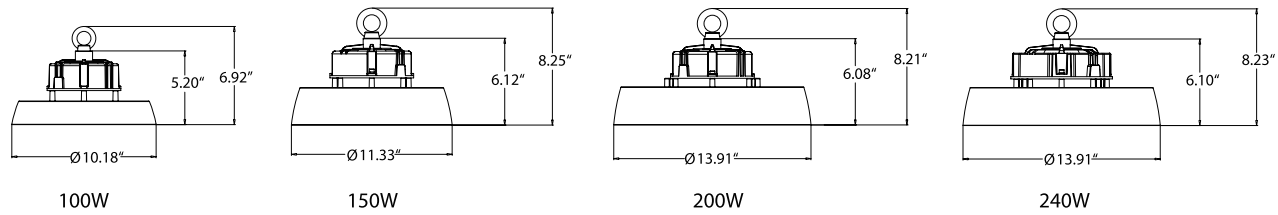


4.Lock the screw.

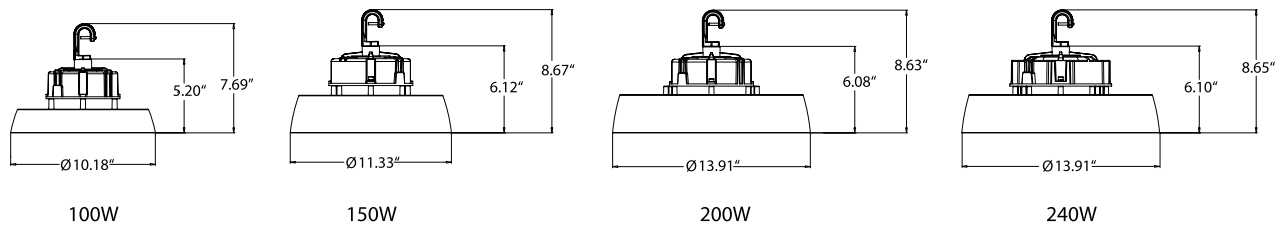


Product Dimension

1. Ring Mount



2. Hook Mount

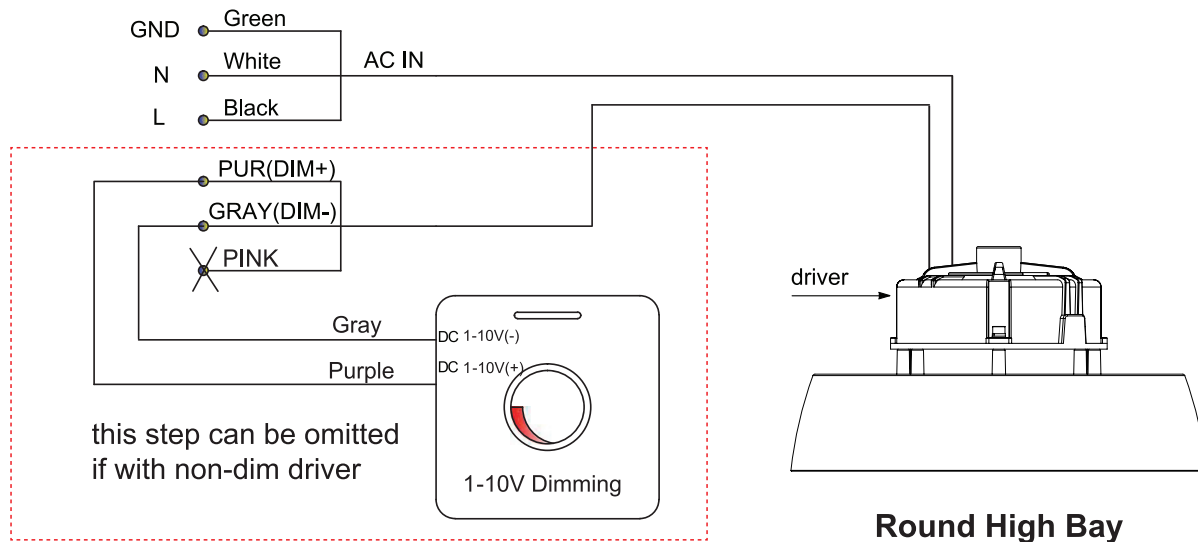


Wiring Connection

Turn off the power, connect AC wire. black wire to L, white wire to N, and green wire to E.

Dimmer connection (With dimmable driver.)

1. Compatible with 1-10V dimming.
2. Connect wires as below, purple wire is D +, gray wire is D -, cap pink wire.



The Installation must be carried out by a qualified electrician.

Warranty Information:

This product is warranted for five years from the date of purchase.

If this product does not perform to the specifications supplied on this package, send an email or write to the address below for product return and replacement. This replacement is the sole remedy available.

Liability for incidental or consequential damage is expressly excluded.

Visit www.halcolighting.com for full warranty details and compatibility information.



Intertek
5000444
CONFORMS TO
NSF STD.2